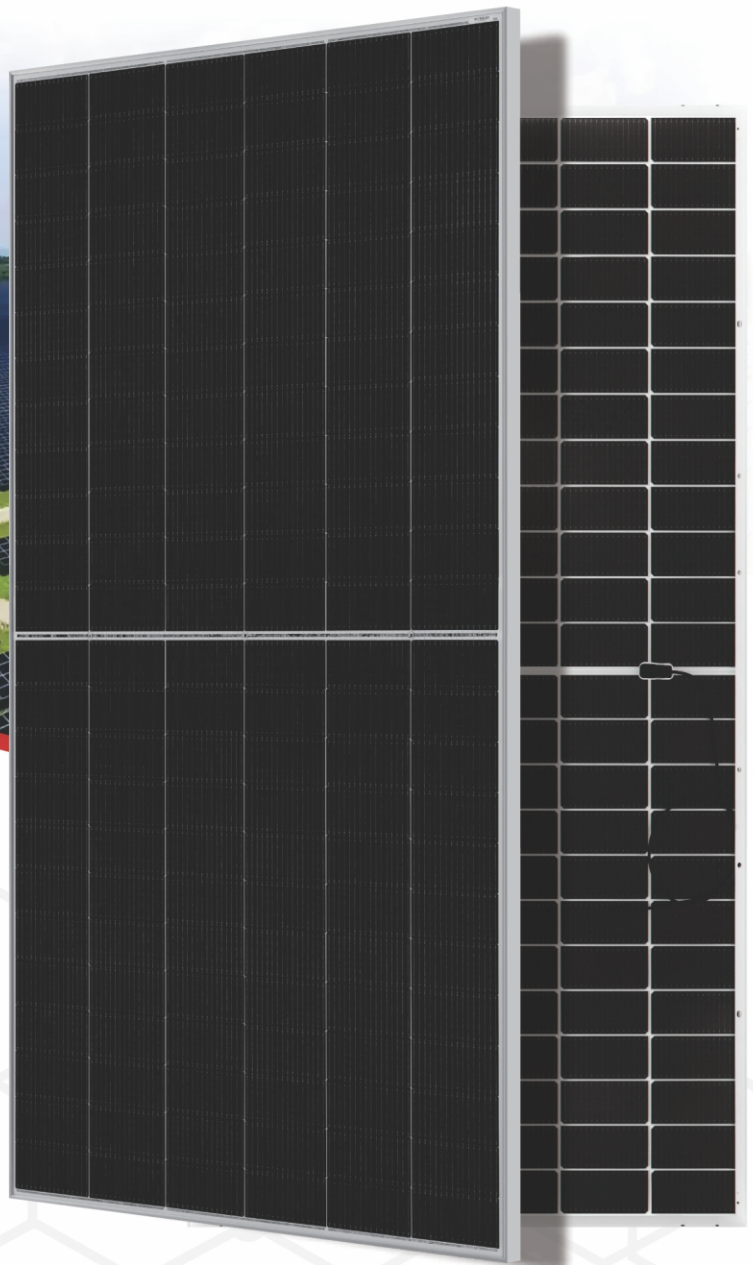
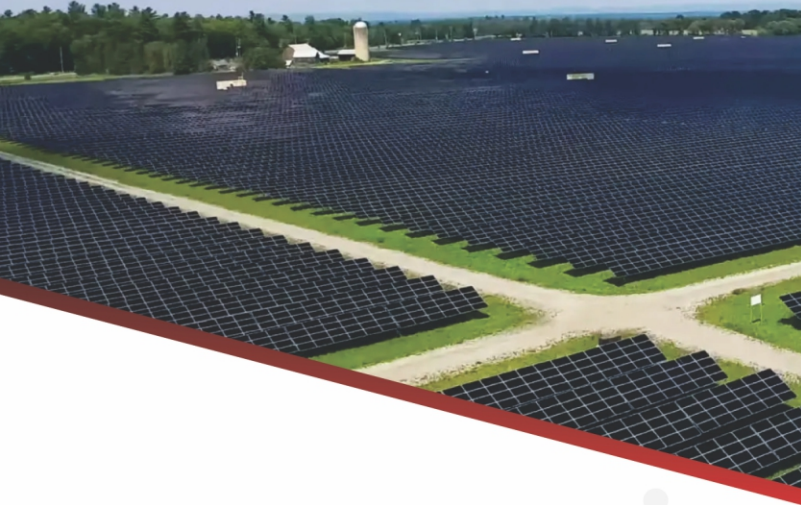


MOTOMA®

Power into the Future



560-585W (N-type Bifacial TOPCon)

Double-Glass Mono Crystalline

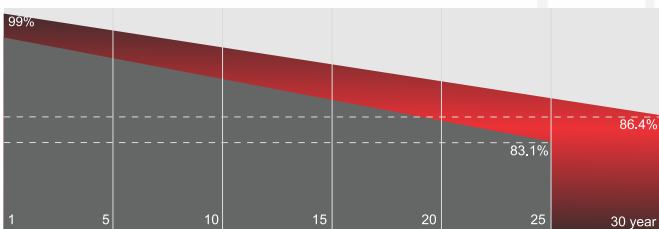
N type / 144 Half-Cut

Superior Warranty

- 12-year product warranty
- 30-year linear power output warranty

The power attenuation of the modules in the first year shall not exceed 2.0%, and the power attenuation shall not exceed 0.4% every year thereafter. At the end of the 30-year guarantee period, the power of the modules shall not be lower than 86.4% of the nominal power;

*The above power test is carried out under standard test conditions



■ N-type Bifacial Double Glass Module Linear Performance Warranty ■ Standard Module Linear Performance Warranty

Comprehensive Certificates

- IEC 61215, IEC 61730
- ISO 9001: 2015 Quality management systems
- ISO 14001: 2015 Environmental management systems
- ISO 45001: 2018 Occupational health and safety management systems
- TUV, CE



N-type (TOPCon Technology)

With lower (LID) , "Light Induced Degradation"



Double Glass Structure (Bifacial)

Minimize (PID) effect , " Potential Induced Degradation"



Dual-Side Power Generation

Increased power generation gain



16 BB & Half Cut Cell Technology

Increased Efficiency & Reliability



Lower temperature coefficient

Increases energy yield in hot climate



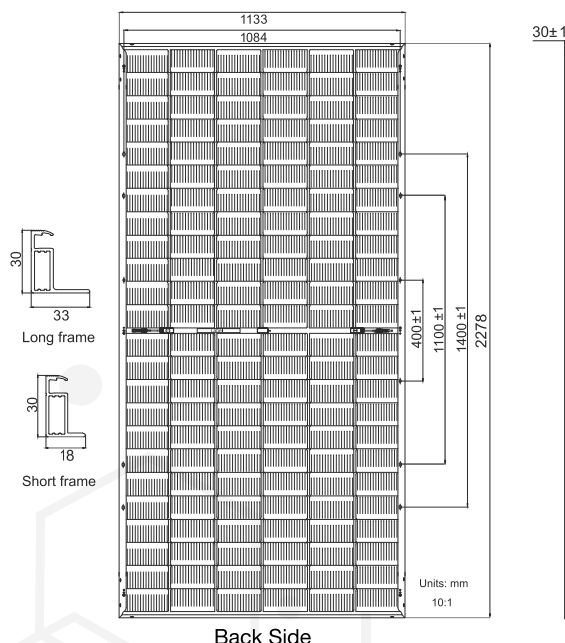
Lower power attenuation

Higher generation returns



Mechanical Specifications

Cell Type :	144 pcs (6x24) , N-type Mono - 16 BB
Dimensions :	2278×1134×30mm
Weight :	33 kg
Front Glass :	2 mm heat strengthened glass + anti-reflective coating
Rear Glass :	2 mm heat strengthened glass
Snow/Wind :	5400/2400 Pa dual
Junction Box :	3 Diodes , IP68
Connector :	Compatible MC4-EVO 2A , IP68
Cable :	Lenght 300mm+/-5mm / Diameter 4 mm ²



Electrical Specifications

Max Power - Pmax [0+~5W] (W)	560	565	570	575	580	585
Max Power Voltage - Vmp (V)	41.95	42.14	42.29	42.44	42.59	42.74
Max Power Current - Imp (A)	13.35	13.41	13.48	13.55	13.62	13.69
Open Circuit Voltage - Voc [±3%] (V)	50.67	50.78	51.07	51.27	51.47	51.67
Short Circuit Current - Isc [±3%] (A)	14.13	14.19	14.25	14.31	14.37	14.43
Module Efficiency (%)	21.68	21.87	22.07	22.26	22.45	22.64
Bifacial Gain 10% (W)	616	622	627	633	638	644
Bifacial Gain 20% (W)	672	678	684	690	696	702
Bifacial Gain 30% (W)	728	735	741	748	754	761
Max System Voltage (V)	1500	1500	1500	1500	1500	1500
Max Series Fuse (A)	30	30	30	30	30	30

Temperature Parameter

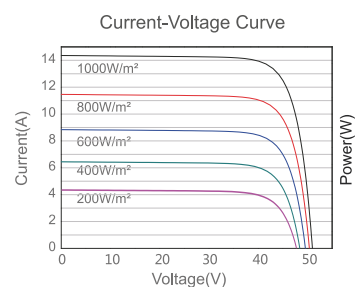
Temperature Cycling Range:	-40°C ~ +85°C
Norminal Module Operating Temp:	45±2 °C
Temperature Coefficient of Isc:	0.050% / °C
Temperature Coefficient of Voc :	-0.284% / °C
Temperature Coefficient of Pmax :	-0.350% / °C

Packaging Configuration

Pieces per pallet : 36 pcs (Pallet : 2310x1140x1257 mm)

Pieces per Container 40' HQ : 720 pcs

I-V Curve 570W



Guarantee

12-year warranty on materials & workmanship

30-year linear power output warranty