

Remote Monitoring & Management



SNMP Web Card



SNMP Web Pro



Modbus Card



Modbus Box

SNMP Web Card

- Allow control and monitoring of multiple inverters through RJ-45 network connection
- Real-time dynamic graphs of inverter data
- Warning notifications via audible alarm, broadcast, mobile messenger, e-mail and SNMP traps
- Historic data log stored in centralized PC database
- Simple firmware upgrade with one click
- Password security protection and remote access management
- Support optional environmental monitoring detector for temperature, humidity and smoke

SNMP Web Pro

- Built-in web server to control and monitoring of multiple inverters through LAN or Internet
- Built-in 32MB flash memory to save more than 2 million threads
- Set with real-time clock to record log by date and keep running up to 7 days even without power connection.
- Support EMD monitoring and SMS service

Modbus Card

- Real-time control and monitoring of multiple inverters via RS-485 communication port
- Supports Modbus RTU protocol
- Provide MODBUS functions including read Holding Registers and write Registers
- Provide surge protection

Modbus Box

- Support to monitor off-grid inverter through modbus interface
- Implement MODBUS RTU protocol
- Integrated with WatchPower software
- Support Axpert series inverter

Monitoring Software

SolarPower



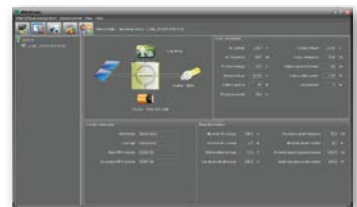
SolarPower is a solar inverter monitoring software. It can monitor multiple devices via **USB and Serial port** at the same time. The major functions of SolarPower monitoring software include data log for devices, power generation statistics, alarm messages, fault messages and parameter setting for devices.

SolarPower Pro



SolarPower Pro is a solar inverter monitoring software to monitor up to 247 devices via **modbus or SNMP** interface. It allows web browsing in a networking environment. The major functions of SolarPower Pro monitoring software include data log for devices, power generation statistics, alarm messages, fault messages, and parameter setting for devices.

WatchPower



WatchPower is an off-grid inverter monitoring software which can monitor multiple Axpert devices via serial port at the same time. The major functions include data log for devices, alarm and fault recording. Besides, it also can configure advanced parameters such as charger source priority, output source priority, AC input range and battery type based on diverse applications.